

MONTREAL ROUND ROSE

Box Pack Specifications



SATIN NICKEL



These finishes are available with Microban anti-microbial coating: 15

AVAILABLE FUNCTIONS:



Passage




Privacy



Entry



Inactive

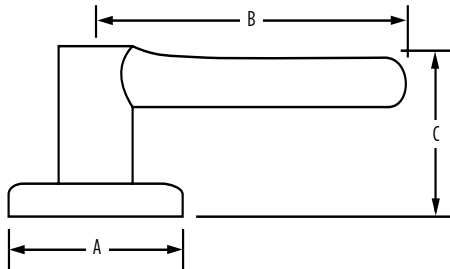
MRL		 20 min.	Satin Nickel
Passage	GLA101 MRL RDT	<input type="checkbox"/>	<input type="checkbox"/>
Privacy	GLA331 MRL RDT	<input type="checkbox"/>	<input type="checkbox"/>
Entry	GLA535 MRL RDT	<input type="checkbox"/>	<input type="checkbox"/>
Inactive	GLA12 MRL RDT	<input type="checkbox"/>	<input type="checkbox"/>

SPECIFICATIONS



20 min.

Door Prep	Cross Bore 2-1/8" Edge Bore 1" Latch Face 1" x 2-1/4"
Backset	Adjustable to 2-3/8" or 2-3/4"
Door Thickness	1-3/8" - 1-3/4" doors standard. 2-1/4" doors optional
Cylinder	SmartKey standard, see specific product for more WS and KW availability
Faceplates	1" x 2-1/4". Round corner, square corner and drive-in available in box
Strikes	2-1/4" full lip. Other options available
Bolt	1/2" throw. Nickel plated
Door Handing	Reversible for right or left-hand doors
ANSI/BHMA	A156.2 Grade 2
ADA	Functions GLA 101, GLA 12 satisfies section 4.13.9 ADA Requirement
UL	Fire rating, see specific product for availability
ASTM	All Weiser product meets ASTM E 331 water penetration testing



Dimensions	A	B	C	C (Keyed)
Montreal (Round Rose)	2 5/8"	4 1/4"	2 5/8"	2 11/16"

WARRANTY:

Weiser™ products provide a "Lifetime Mechanical Warranty" that covers all defects in material and workmanship. For more information, please visit ca.weiserlock.com/en/warranty/.